



jazwares™

Digital Camera

USER GUIDE

© Jazwares, Inc. 2009

CONTENTS

Please read the instructions along with the camera carefully before you use it, so that you can operate it conveniently.

WELCOME, Safety Tips & Battery Info	3
Camera Controls & Functions	4-6
Using Your Digital Camera	7-9
Installing Software, Downloading Photos & Web Cam	10
Video & Downloading 1.3 Mp Photos	11
Problem Solving	12
Notes	13
Warranty	14-15

Included in box:

- Digital Camera With Clip
- USB Cable
- Software CD
- User Guide and Warranty

Congratulations on your purchase of the Hershey's Digital Camera! We hope you enjoy all the great features of the camera. To get the most out of your Digital Camera please read this manual as it provides tips and information about its various features.

SAFETY TIPS:

- Use this only as intended.
- To prevent fire or shock hazard, do not expose this unit to rain or moisture.
- Do not submerge the unit in any liquid
- Do not disassemble

Battery Information:

NOTE: Always download your images to your computer before replacing or removing the battery. Removing and replacing the battery will clear the camera's memory and delete all your stored photos!

Warning:

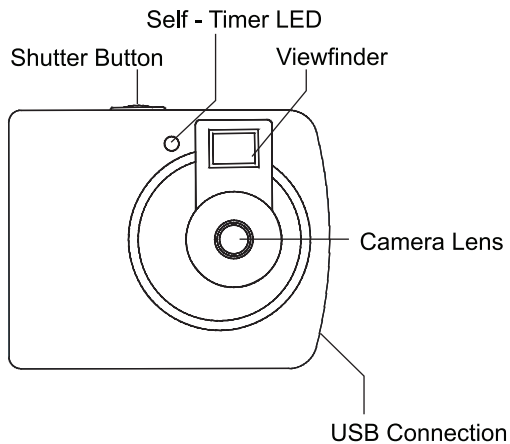
- If the battery cover is opened accidentally, the photos in the camera will be deleted.
- If the camera is not being used for a long period of time, please remove battery to avoid discharging or corrosion of battery.
- Do not dispose of batteries in fire; batteries may explode
- Do not mix used and new batteries.
- Do not mix alkaline, standard (carbon-zinc) batteries, or rechargeable (nickel-cadmium) batteries.

Battery Loading : Unscrew the battery compartment located on the back of the camera and place 1 AAA alkaline battery according to polarity shown. Close the compartment and press the MODE button to power on the camera. The default mode indicates that it is ready to take "High-resolution" pictures.

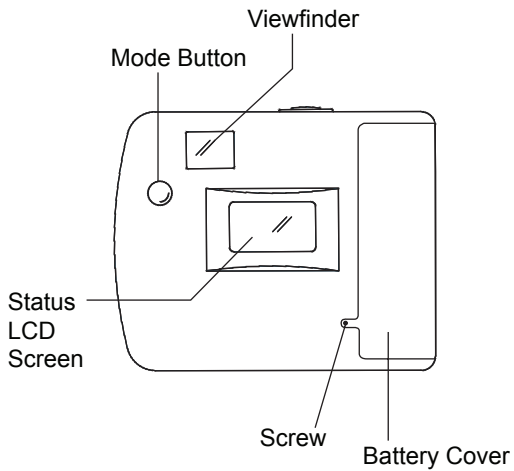
The LCD will display the number of photos remaining to be taken in the current resolution and compression modes.

Low Battery : The LCD screen flashes to indicate that the battery is low and needs to be replaced. Replacement of batteries must be done by an adult.

Camera Controls:



Camera Controls:



Camera Controls:

Viewfinder : Allows you to center your photos.

Status LCD Screen : Indicates amount of photos taken.

Shutter Button : Press the button to take your pictures.

Mode Button : Use this button to change the resolution, delete photos & more.

Battery Cover : Change the batteries by opening the battery compartment.

USB Connection : Use the USB cable to download your images to your computer.

Camera Lens : Keeping the lens clean will allow you to take better photos.

Camera Functions:

Camera Function: Without any film you can capture your favorite moments and store your pictures in the internal memory of the camera.

Computer Interface: It is not necessary to develop negatives.

The photos can be transferred onto your computer using the USB cable.

You can print your photos or send them to your friends.

Video Function: When connected to a computer, the camera can be used as a web cam.

Timer: The camera has a time delay of 10 seconds.

After 10 seconds the camera will take the photograph automatically.

Continuous Shooting: In certain cases, you may wish to record a group of consecutive images. Your camera will take 3 consecutive pictures.

Automatic Exposure Control: The camera automatically controls exposure in poor light conditions meaning that you do not have to worry about aperture or shutter speed.

Automatic Shutdown (sleep mode): After 1 minute of inactivity the camera automatically shuts down reducing the consumption of battery to a minimum.

Using Your Digital Camera:

025

Hi-Resolution
Pictures

This is the default mode when the camera is turned on.

To take pictures in this mode, press the **Shutter Button**. A distinct beep can be heard and a photo is taken. Automatically the number displayed on the LCD screen will decrease by one.

NOTE : If the brightness is too low, 2 quick beeps are heard indicating that the photo can not be taken.

Change the default settings by pressing the MODE BUTTON.

Continue pressing until your reach your desired mode.

Once the setting is displayed on the LCD, press Shutter Button to select.

Camera Mode Options

025

Hi-Resolution
Pictures

oFF

Ready To Close
Or Shutdown
Mode

025

Timer Mode



025

AVI Mode



025

Continuous
Capture



025

Delete All



025

Delete Last



025

Change to Low
Resolution

Hd

Change To
Compressed
Mode

Ld

Change To
Normal
Mode

50

Change To
50 Hz

60

Change To
60 Hz

076

Compression
High Resolution
Pictures

100

Low Resolution
Pictures

274

Compression
Low Resolution
Pictures

Sleep Mode (power saving mode):

The LCD screen displays the word "off" in a stylized, lowercase font.

Ready To Close
Or Shutdown
Mode

Press the **MODE BUTTON** until the LCD screen shows **OFF**, then press the **SHUTTER BUTTON**.

A distinct beep can be heard to confirm the camera goes into a sleep mode.

The camera goes into sleep mode automatically after 1 minute of inactivity. In sleep mode energy consumption is very low and the battery life is prolonged. To use your camera again just press the mode button.

Timer Mode:

The LCD screen displays the number "025" in a digital font, with a small timer icon (a circle with a dot) above it.

Timer Mode

Press the **MODE BUTTON** until the LCD screen shows **Timer Mode**, then press the **SHUTTER BUTTON**.

The camera counts down for 10 seconds with distinct beeping sounds, and then captures a photo.

AVI Mode:

The LCD screen displays the number "025" in a digital font, with a small video camera icon above it.

AVI Mode

Press the **MODE BUTTON** until the LCD screen shows **AVI Mode**, then press the **SHUTTER BUTTON**.

Press the shutter button for a second, and the camera will continuously capture for about 6 frames per second.

Continuous Capture Mode:

The LCD screen displays the number "025" in a digital font, with a small icon of three overlapping rectangles above it.

Continuous
Capture

Press the **MODE BUTTON** until the LCD screen shows **Continuous Capture**, then press the **SHUTTER BUTTON**.

The camera will continuously capture 3 photos.

Deleting All Photos Saved In Memory:



Delete All

Press the **MODE BUTTON** until the LCD screen shows **Delete All**, then double press the **SHUTTER BUTTON** to confirm your choice.

All the photos stored in the camera will be deleted.

Deleting Last Photo Saved In Memory:

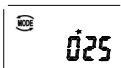


Delete Last

Press the **MODE BUTTON** until the LCD screen shows **Delete Last**, then press the **SHUTTER BUTTON** to confirm your choice.

The last photo taken will be deleted.

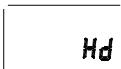
Changing Resolution:



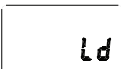
Change to Low Resolution

Press the **MODE BUTTON** until the LCD screen shows **Change To Low Resolution**, then press the **SHUTTER BUTTON**.

Changing Compression:



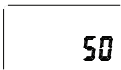
Change To Compressed Mode



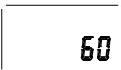
Change To Normal Mode

Press the **MODE BUTTON** until the LCD screen shows **Hd** or **Ld**, then press the **SHUTTER BUTTON**.

Modifying Frequency:



Change To 50 Hz



Change To 60 Hz

Press the **MODE BUTTON** until the LCD screen shows **Change To 50 Hz** or **Change To 60 Hz**, then press the **SHUTTER BUTTON**.

Using Software CD:

Do not connect the camera before the software is installed. Insert the CD in your CD-ROM drive.

DO NOT CONNECT YOUR CAMERA TO THE COMPUTER WHILE YOU INSTALL THE DRIVER.

After successful installation of driver, restart your computer.

Click MyDSC2

Downloading Pictures:



Connect the camera to your computer with the USB cable. Double click **MyDSC2** on the computer desktop. Click on **My DSC2**.

After saving the photos you can empty the memory of your camera and begin taking pictures again.

Using The Web Cam Function:

Connect the camera to your computer with the USB cable. Double click **MyDSC2** on the computer desktop.

Click on **PCCam**.
Select **Preview** in **Options**.

If you would like to change the size of the image, select **Video Capture Pin** in the **Options** menu, and you can choose the size you want

Creating & Saving Video:

Create a video clip with the **AVI** mode.
Connect the camera to your computer with the USB cable.
Double click **MyDSC2** on the computer desktop.

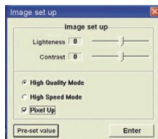
Click on **M DSC**.
Select **Download Photos** and **Save photos** to save the captured video to a folder on your computer. Open and watch the video!

Downloading A Photo With 1.3 Mp Resolution:



Connect the camera to your computer with the USB cable.
Double click **MyDSC2** on the computer desktop.
Click on **MyDSC2**.

When downloading the picture from your PC, the default is 1.3 interpolated MP. Please **DO NOT** select Pixel Up, if you do not want your photos downloaded at an interpolated higher resolution.



Problem Solving:

Commonly Encountered Problems :

When pressing the mode button camera does not turn on.

- Battery level is too low. You should replace the battery.

The camera cannot transfer photos on to the computer or says there are no photos.

-Restart the computer and reconnect the camera.

-Check the control panel/system settings, if it is not present, reinstall it again

Need More Help?

Do Not Return Item to Store.

Call **1-800-370-1827** and speak to a customer service representative.

NOTES:

This equipment has been tested and found to comply with the limits for a Class B digital device, pursuant to Part 15 of the FCC rules.

These limits are designed to provide reasonable protection against harmful interference in a residential installation. This equipment generates, uses and can radiate radio frequency energy and, if not installed and used in accordance with the instructions, may cause harmful interference to radio communications.

However, there is no guarantee that interference will not occur in a particular installation. If this equipment does cause harmful interference to radio or television reception, which can be determined by switching the equipment off and on, the user is encouraged to try to correct the interference by one or more of the following measures:

Reorient or relocate the receiving antenna.

- Increase the separation between the equipment and receiver.
- Connect the equipment into an outlet on a circuit different from that to which the receiver is connected.
- Consult the dealer or an experience radio/TV technician for help.

Limited Ninety (90) Day Warranty:

WARRANTY COVERAGE

Jazwares, Inc.'s warranty obligation is limited to the terms set forth below.

WHO IS COVERED

Jazwares, Inc. warrants the product to the original purchaser or the person receiving the product as a gift against defects in material & workmanship as based on the date of the original purchase from an authorized dealer or retailer. The original sales receipt showing the product name & the purchase date from an authorized retailer is considered such proof.

WHO IS COVERED

Jazwares, Inc. warranty covers new products if a mechanical defect arises & a valid claim is received within the Ninety (90) Day Warranty Period. At its option, Jazwares, Inc. will either (1) repair the product at no charge, using new or refurbished replacement parts, or (2) exchange the product with a product that is new or which has been manufactured from new, or serviceable used parts & is at least functionally equivalent or most comparable to the original product in Jazwares, Inc.'s inventory, or (3) refund the original purchase price of the product.

Jazwares, Inc. warrants replacement products or parts provided under this warranty against defects in materials & workmanship from the date of the replacement or repair for ninety (90) days or for the remaining portion of the original product's warranty, whichever provides longer coverage for you. When a product or part is exchanged, any replacement item becomes your property and the replaced item becomes Jazwares, Inc. property. If a refund is granted, your product becomes Jazwares, Inc. property.

Replacement product or refund can only be sent if all warranty requirements are met. Failure to follow all requirements can result in delay.

WHAT IS NOT COVERED - EXCLUSIONS & LIMITATIONS

The limited warranty applies only to the products manufactured by or for Jazwares, Inc. that can be identified by the trademark, trade name, or logo affixed to it. This limited warranty does not apply to any non Jazwares, Inc. hardware product or any software, even if packaged or sold with the product. Non Jazwares, Inc. manufacturers, suppliers, or publishers may provide a separate warranty for their own products packaged with the bundled product. Jazwares, Inc. is not liable for any damage to or loss of any programs, data or other information stored on any media contained within the product, or any non - Jazwares, Inc. product or part not covered by this warranty.

Limited Ninety (90) Day Warranty:

WHAT IS NOT COVERED - EXCLUSIONS & LIMITATIONS

This warranty does not apply

- (a) to damage caused by accident, abuse, misuse, misapplication, or non - Jazwares, Inc. product,
- (b) to damage caused by service performed by anyone other than Jazwares, Inc.
- (c) to a product or a part that has been modified without the written permission of Jazwares, Inc.

LIMITED WARRANTY DOES NOT COVER

- Shipping charges to return defective product to Jazwares, Inc.
- Product repair and/or part replacement because of improper installation, connections to improper voltage supply, abuse, neglect, accident, unauthorized repair or other cause not within the control of Jazwares, Inc.
- Damage or claims for products not being available for use, or for lost data or lost software.
- Damage occurring to product during shipping.
- A product that requires modification or adaptation to enable it to operate in any country other than the country for which it was designed, manufactured approved and/or authorized, or repair of products damaged by these modifications.
- Product lost in shipment and no signature verification receipt can be provided.
- Failure to operate per Owner's Manual.

RMA REQUIREMENT

If Jazwares, Inc.'s Customer Service verifies that the product is defective, the Return Authorization Department will issue an RMA number to be placed on the outer package of the product. Jazwares, Inc. can not accept any product that does not include an RMA number on the package.

BEFORE RETURNING ANY PRODUCT, CONTACT JAZWARES, INC. CUSTOMER SERVICE. Customer service is available 9-6 EST at 1-800-370-1877.

REPAIR OR REPLACEMENT AS PROVIDED UNDER THIS WARRANTY IS THE EXCLUSIVE REMEDY FOR THE CONSUMER. JAZWARES, INC. SHALL NOT BE LIABLE FOR ANY INCIDENTAL OR CONSEQUENTIAL DAMAGES FOR BREACH OF ANY EXPRESS OR IMPLIED WARRANTY ON THIS PRODUCT. EXCEPT TO THE EXTENT PROHIBITED BY APPLICABLE LAW, ANY IMPLIED WARRANTY OF MERCHANTABILITY OR FITNESS FOR A PARTICULAR PURPOSE ON THIS PRODUCT IS LIMITED IN DURATION TO THE DURATION OF THIS WARRANTY.

Some states do not allow exclusions or limitation of incidental or consequential damages, or allow limitations on how long an implied warranty lasts, so the above limitations or exclusions may not apply to you

This warranty gives you specific legal rights. You may have other rights which vary from state to state.

Features & Specifications:

SPECIFICATIONS:

Resolution: 300K Pixels (640x480) VGA

Lens: Non-spherical Lens

Aperture: 1: 2.6

Focus: f=5.4mm

Image Variation: 1m-infinity

Illumination: 100-16000(lux)

Storage Capacity: 4x16Mb SDRAM

Number Of Pictures Stored In Memory	High Resolution	Low Resolution
Without Compression	25	100
With Compression	76	274

Power Supply: 1 AAA Battery

Interface: USB port

Digital Camera